

Remove and Clean POGO connector – Evolution HP

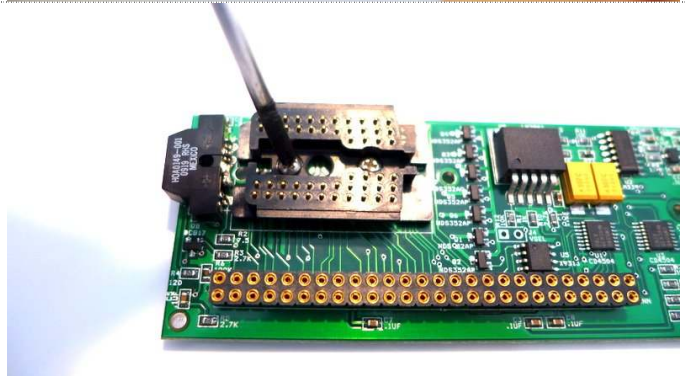
! CAUTION: Advanced procedure. Can result in non-operational POGO board.
Best procedure is to work on a clean benchtop on white surface.

1. Turn board on it's side, black POGO connector facing downwards and irrigate connector with some solvent (only Methylated Spirits, Isopropyl Alcohol or Ethanol)

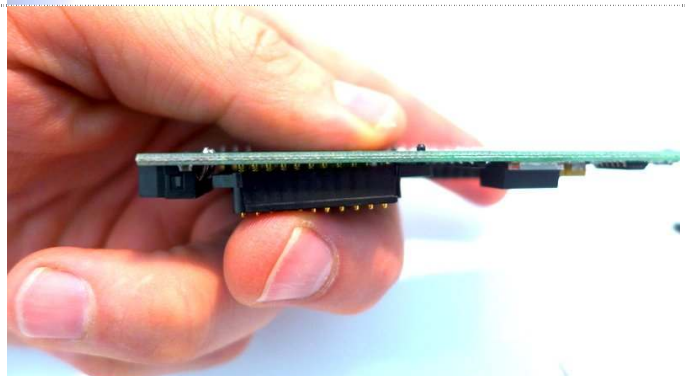
Do NOT use Acetone, Mineral Turpentine, Thinners or other inkjet solvents.



2. Unscrew the 2 retaining screws with a Phillips head (PH1) "Fine" screwdriver

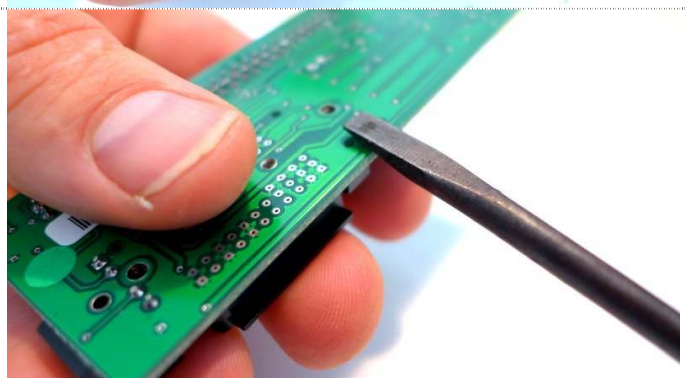


3. Hold the board upside-down and keep POGO connector in place with your fingers

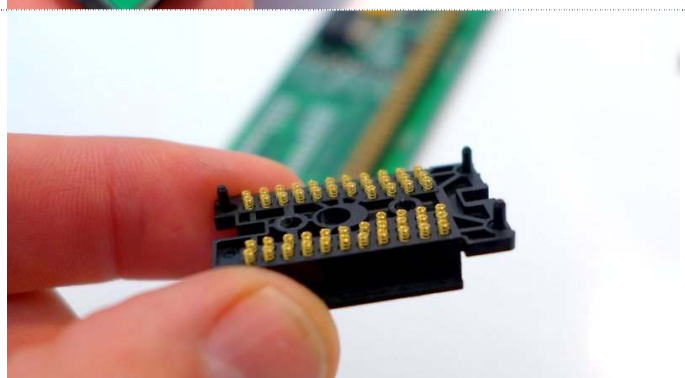


4. Press down on the black locating/holding pin nearest to the edge of the board

(keep holding with light finger pressure so that POGO assembly does not fall out)



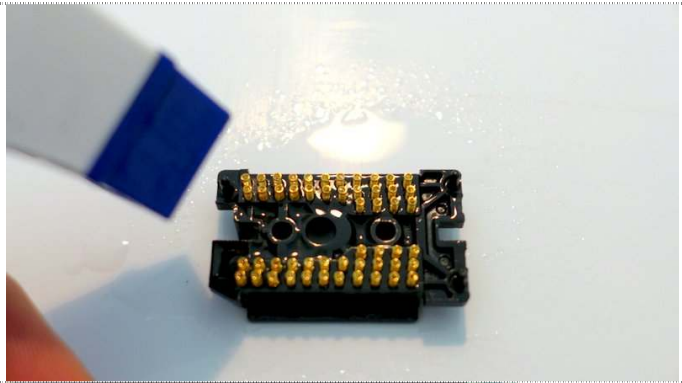
5. Carefully remove the POGO connector. KEEP IT UPSIDE DOWN. Keep an eye out for any springs stuck to the contacts on the board. These should be removed with some methylated spirits and re-inserted into the POGO connector



6. Place the POGO connector on the benchtop and rinse/irrigate with some methylated spirits to clean it.

You can also place the connector in a container and fill with some methylated spirits to soak and clean.

Dry or allow to dry before re-assembling



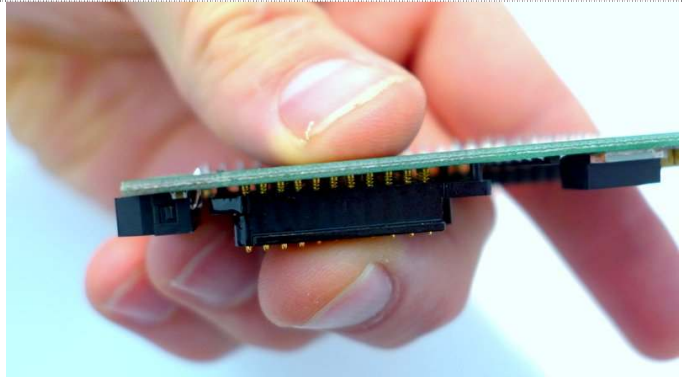
7. Use some methylated spirits on a foam-tipped swab and clean contacts on the board.

To finish, use an eraser to polish the contacts further.



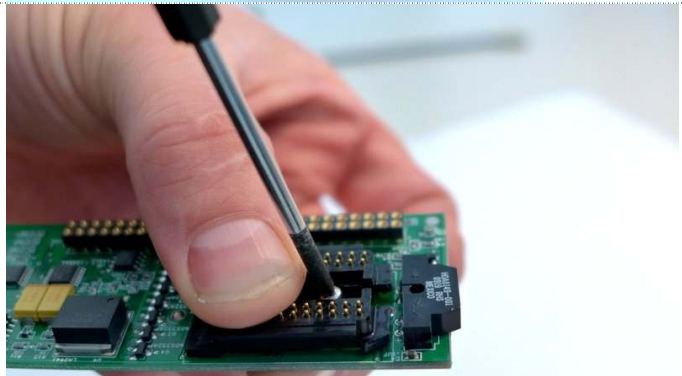
8. Holding the board upside down carefully fit the POGO connector back into the locating pins.

Press firmly and continue to hold in place with light finger pressure as you turn the connector over.



9. Finger-tighten the 2 retaining screws with a Phillips head (PH1) "Fine" screwdriver while maintaining light finger pressure to hold POGO in place.

Do not overtighten!



10. Test pins are properly located and operating by pressing down with fingers.



! **NOTE: Reattach POGO board to CPU board with care to ensure header pins are not bent. Separate instructions are available for printhead disassembly/reassembly**